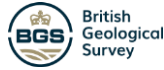


GEOLOGICAL SOCIETY BECCS FIELD TRIP 2022

In partnership with:



Field Trip Information

The Geological Society of London, in partnership with Drax, British Geological Survey, Imperial College London, and ERCE Evolution, presents a field trip exploring the complete lifecycle of Bioenergy with Carbon Capture and Storage (BECCS), a carbon-negative baseload electricity generation technology.

Locations, timing, and information

Starting Point

Doncaster Rail Station, Station Court, Doncaster DN1 1PE 09:40

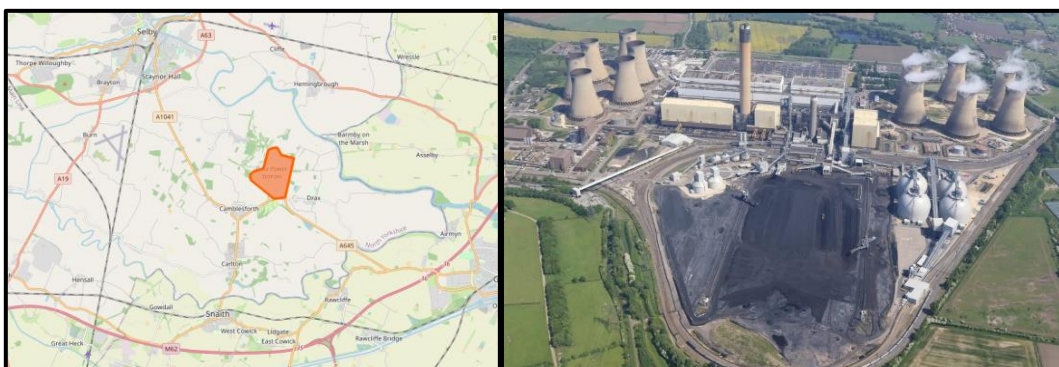
Participants will be collected by bus and transported to all locations and returned to Doncaster railway station by 4:40 PM.



Drax Power Station

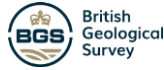
Drax Power Station, Drax, Selby YO8 8PH 10:25

The Drax site visit shall include a 2 hour tour of the power station accompanied by a fully trained tour guide. The tour will include guided walks into the heart of the station, in addition to the opportunity to look at the carbon capture technology pilot plants on site (Mitsubishi Heavy Industries, and C-Capture). There will also be an overview of the Drax BECCS project which is currently in FEED stage, and the wider Zero Carbon Humber development.



GEOLOGICAL SOCIETY BECCS FIELD TRIP 2022

In partnership with:



Styrrup Quarry

On the B6463 road heading South-West from Styrrup Village 14:00
GPS Co-ordinates: 53°24'10.2"N 1°05'25.2"W / What3words: tapers.compelled.postage

The Styrrup outcrop features Sherwood / Bunter Sandstone and is a good onshore example of the geology to be used for the long-term storage of CO₂.

The visit to Styrrup Quarry will be led by Dr. Ed Hough, Senior Geologist at the British Geological Survey, and will feature a talk and an interactive exercise led by Dr. Sam Krevor, Reader in Carbon Sequestration Studies at Imperial College London.



End Point

Doncaster Rail Station, Station Court, Doncaster DN1 1PE 16:40

Participants will be dropped back at Doncaster Rail Station in time to board the 16:48 train to Kings Cross (arr. 18:31).

What to bring

This field trip will involve outdoor activity in any weather conditions, so you are advised to wear sturdy footwear and comfortable clothing. British springtime weather can be highly variable, so please also bring a waterproof and warm layers in addition to sunscreen.

Please also bring your own packed lunch to be consumed on the coach between Drax and the Styrrup quarry.

Further Information

For further information or to raise any questions, please contact: smcquaid@erce.energy

For further information on BECCS, go to:

<https://www.drax.com/about-us/our-projects/bioenergy-carbon-capture-use-and-storage-beccs/>

For further information on Zero Carbon Humber, go to:

<https://www.zerocarbonhumber.co.uk/>

For further information on the Sherwood Sandstone, go to:

<http://nora.nerc.ac.uk/id/eprint/511739/>